

ARCH PLAZA

24405-24647 Arch St., Santa Clarita, CA 91321



Disclaimer:

This Sales package was prepared for informational Purposes only and not meant to be a representation disclosure.
Please see disclaimer within for further details.

RE/MAX OF VALENCIA – COMMERCIAL DIVISION 27720 Dickason Dr. Valencia, CA 91355

Tel: 661.702.4601 Fax: 661.702.4604

www.SoCalPowerHouse.Com

ARCH PLAZA

24405 – 24647 ARCH STREET
SANTA CLARITA, CA 91321

OFFERING MEMORANDUM



RE/MAX OF VALENCIA – COMMERCIAL DIVISION 27720 Dickason Dr. Valencia, CA 91355
Tel: 661.702.4601 Fax: 661.702.4604
www.SoCalPowerHouse.com

Retail Strip Center

SANTA CLARITA, CALIFORNIA

OFFERING MEMORANDUM

EXCLUSIVELY LISTED BY:

SEAN DARYANI

Sean@SoCalPowerHouse.com

310.880.3888

BRE# 01267316

SHAWN SOHI

Shawn@SoCalPowerHouse.com

818.415.4776

BRE# 01747411

www.SoCalPowerHouse.com



RE/MAX OF VALENCIA – COMMERCIAL DIVISION 27720 Dickason Dr. Valencia, CA 91355

Tel: 661.702.4601 Fax: 661.702.4604

www.SoCalPowerHouse.com

Introduction – Disclaimer

This investment offering Information package has been prepared by RE/MAX Commercial / RE/MAX of Valencia and does not claim to provide an absolute accurate summary of the Property or any of the documents related thereto, nor do they declare to be all inclusive or to contain all of the information which prospective investors may need or require for acquisition purposes. All forecasts have been developed by the Seller, and designated sources, and are based upon assumptions related to the general economy, competition and other factors beyond the control of the Seller, and therefore are subject to discrepancy.

No representation is made by the Seller or RE/MAX Commercial / RE/MAX of Valencia as to the concrete precision or comprehensiveness of the information presented herein, and nothing contained herein, is, or shall be relied on as assurance or representation as to the future performance of the property. Although the information contained herein is believed to be relatively accurate, Seller and its officers, directors, agents and employees renounce responsibility for inaccuracies or reliability and expect potential purchasers to conduct independent due diligence to verify all such information.

Further, RE/MAX Commercial / RE/MAX of Valencia the Seller and its officers, directors, agents and employees renounce any and all liability for representations and warranties, expressed and implied, contained in, or omission from the investment offering Information package or any other written or oral communication transmitted or made available to the recipient. The investment offering Information package does not promise or represent that there has been a change in the business or affairs of the Property or Seller since the date of preparation of the investment offering Information package. Analysis and verification of the information contained in the investment offering Information package is sole duty of the prospective purchaser.

Seller and RE/MAX Commercial / RE/MAX of Valencia each expressly reserve the right, at their sole discretion, to reject any and all expressions of interest or offer regarding the Property and/or cease discussion with any entities at any time with or without notice. Seller shall have no legal commitment or duty to sell the property to any entity reviewing the investment offering Information package offering to purchase the Property unless and until such time that their offer has been approved by the Seller, a written agreement for the purchase of the Property has been fully executed, delivered and approved by the Seller and their attorney(s) at Sellers sole discretion and any conditions to Seller's obligations have been met or waived.

This investment offering Information package and its contents are of a confidential nature. By accepting the investment offering Information package, you agree that you handle it in complete confidentiality, that you will not reproduce or circulate it, that you will not disclose the investment offering Information package or any of its contents to any third parties (except to outside advisors retained by you as needed, for your determination of whether or not to make a purchase offer and from whom you have obtained an agreement of confidentiality) without the prior written authorization of the Seller, and that you will not use the investment offering Information package or any of its contents in any fashion or manner detrimental to the interest of the Seller or RE/MAX Commercial / RE/MAX of Valencia If you do not have an interest in the Property at present, please return investment offering Information package to us.

© 2012 RE/MAX Commercial



SECTION I

OFFERING SUMMARY

Investment Highlights	7
Offering Summary	8
Site Plan	9
Rent Roll	10
Expense List	11
Aerial Overviews	12

SECTION II

INVESTMENT OVERVIEW

Location Overview	15
Local Map	16
Regional Map	17
Parcel Map	18
Demographics	21
City of Newhall	37
SCV Enterprise Zone	38
Arch Plaza Virtual tour	39



ARCH PLAZA, 24405-24647 ARCH STREET, SANTA CLARITA
68,875 SF Land and 25,790 SF Buildings



ARCH PLAZA, 24405-24647 ARCH STREET, SANTA CLARITA

68,875 SF Land and 25,790 SF Buildings

- ✓ Good exposure, street on 3 sides, 12th St, 13th St., and Arch Street
- ✓ Custom construction 1-story Building
- ✓ Flat lot 100% usable land
- ✓ Commercial, industrial, and office zoning mix allow almost any type of tenant
- ✓ 3 parking per 1,000 S.F. of building (actual required retail parking for retail)
- ✓ Upside potential, additional land that can be developed 1,200 S.F. addition can be done behind Inetal Rear building
- ✓ Property is on multiple recorded lots
- ✓ Building has multiple units, flexible floor plan
- ✓ Low rental rates, upside potential
- ✓ Low CAM charge, \$.19 ease of management
- ✓ High Cap rate
- ✓ Price is within reach of a most investors
- ✓ Built as a retail building and not a industrial tilt up building
- ✓ Priced way under construction cost
- ✓ Lyons Ave. has been approved to extend to the main street of the center
- ✓ Future Tract homes are planned on the vacant land across the street
- ✓ Enterprise Zone. Great incentive for many business owners for moving into the area
- ✓ Current Tax rate at 1%, unlike non enterprise zoned centers at nearly 1.5%
- ✓ Existing loan \$1,600,000 is assumable and can be transferred with 1% cost
- ✓ Upgraded building inside and outside
- ✓ Few blocks away from Masters College, Multi million dollars Library, multi-million dollar Community Center, Newhall Train Station.
- ✓ Easy Freeway access
- ✓ Lots of improvement planned in Newhall redevelopment plan.



LOCATION

Arch Plaza
 24405 – 24647 Arch Street
 Santa Clarita, CA 91321

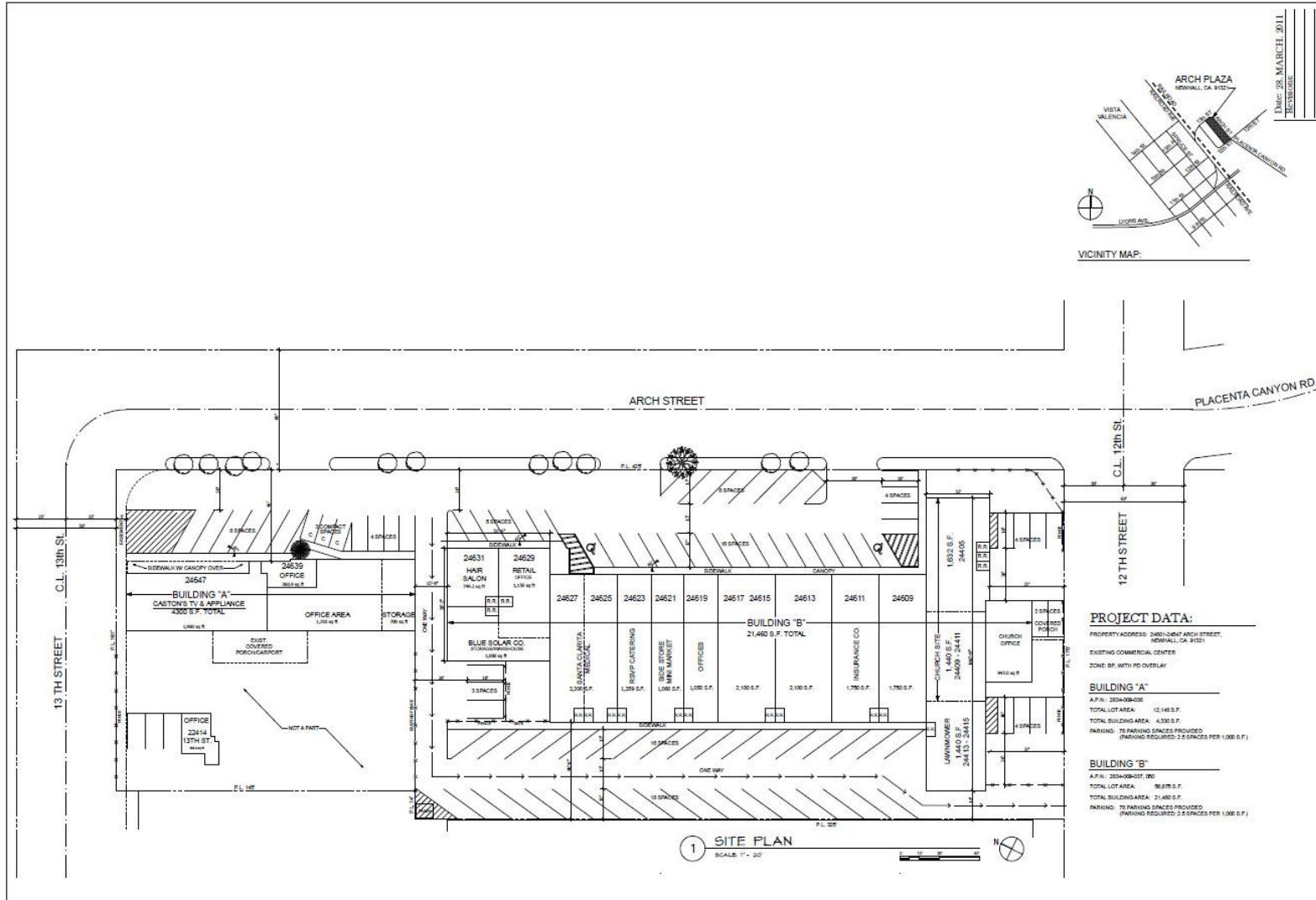
OFFERING SUMMARY

Price:	\$ 4,800,000
Down Payment:	\$ 1,680,000
Capitalization Rate:	5.12%
Cash-on-Cash Return:	6.42%
DSC:	1.18%
Net Rentable Area (NRA):	25,790
Price per Square Foot (NRA):	\$ 186.11
Year Built:	1962; Upgraded-2010
Lot Size (SF/Acres):	68,875 SF / 1.30

FINANCIAL SUMMARY**Cash to New Loan**

Loan Amount:	\$3,120,000
ADS / MO:	\$17,342
Amortization (Years):	25
Est. Interest Rate:	4.50%
(Contact Listing Broker for Further Details)	





Date: 08 MARCH 2011
 REVISIONS

From: Steve Glicker
 architecture
 & urban design

1001 California Street
 Suite 400
 San Francisco, CA 94108
 Phone: 415.774.3333
 Fax: 415.774.3334

ARCH PLAZA
 2460-2467 ARCH STREET, NEWHALL, CA 95221

Sheet Title:
 EXISTING SITE PLAN

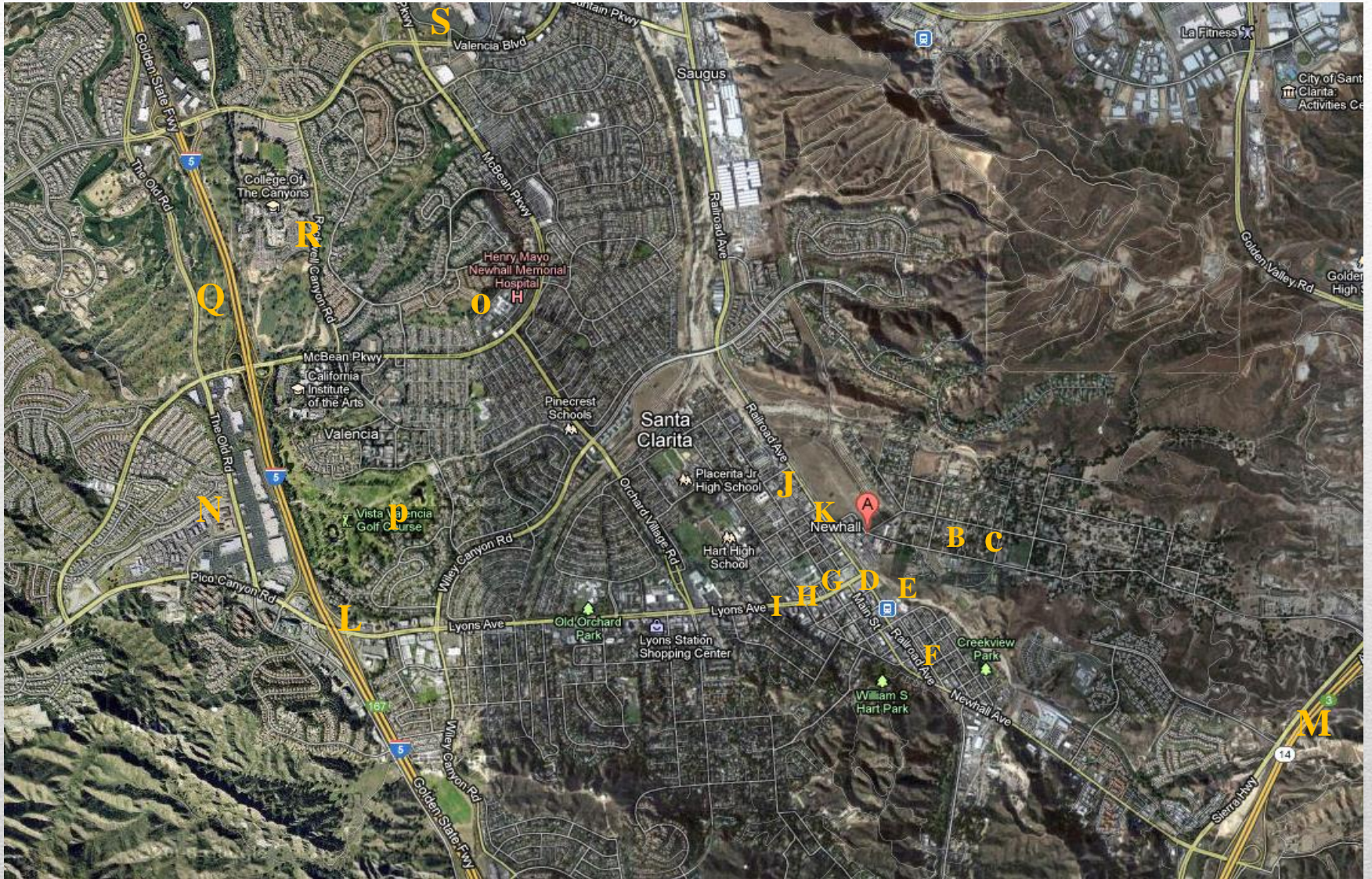
A100

Rent Roll Arch Plaza LLC

<u>TENANT</u>	<u>TERM</u>	<u>RENT</u>	<u>S.F.</u>	<u>RENT/SF</u>
<u>Building: A</u>		<u>24601-24631 Arch Street 21,460 SF</u>		
Lawnmower (22413 12 th St.)	4/1/11 to 4/1/14	\$1,750	1,450	\$1.30 Gr.
Church office	5/1/11 to 5/1/16	\$2,000	2,318	\$0.86 Gr.
Motorcycle Shop (22405 12 th St.)	6/1/13 to 6/1/16	\$1,650	1,632	\$1.01 Gr.
SCV Leasing (24609 Arch)	11/21/12 to 12/1/14	\$1,663	1,750	\$0.95 Gr.
Church Class Rm. 24611 Arch St.	9/1/12 to 9/1/13	\$1,950	1,750	\$1.11 Gr.
Furniture Store (24615 Arch St.)	8/1/13 to 8/1/15	\$1,900	2,100	\$0.91 Gr.
Side Store Market (24617 Arch St.)	12/1/07 to 11/1/17	\$3,000	3,150	\$0.95 Gr.
Ex.Market (24621 Arch St.)	M to M	\$1,500	1,050	\$1.43 Gr
RSVP Catering (24623 Arch St.)	1/3/00 to 1-3-15	\$1,725	1,250	\$1.38 Gr.
SC Medical (24625 Arch St.)	10/1/06 to 10/1/18	\$2,498	2,110	\$1.18 Gr.
Solar Co. (24629 Arch St.)	12/1/11 to 12/1/13	\$2,064	2,150	\$0.96 Gr.
(24631 Arch St.)	Rent Grantee	\$900	750	\$900
<u>Building: B</u>		<u>24639-24647 Arch Street 4,330 SF</u>		
Vet Doctor (24639 Arch St.)	12/1/2 to 12/1/15 2-years option	\$2,060	2,060	\$1.00 Gr.
4-Season Landscape	11/1/12 to 11/1/14	\$2,157	2,270	\$1.0 Gr.
Total:		\$26,817	21,460 S.F.	
Annual Gross Income:		\$321,804		
Annual Expenses:		\$75,811		
Net Operating Income:		\$245,993		

ARCH PLAZA 24405 - 24631 Arch Street, Santa ClaritaOPERATING EXPENSES

PROPERTY TAX	\$37,500 / YR
INSURANCE	\$6,475 / YR
ELECTRIC / GAS	TENANTS
WATER / TRASH	TENANTS
MAINTENANCE	\$21,200 / YR
MANAGEMENT	\$9,654 / YR
MISCELLANEOUS	\$982 / YR
<hr/>		
TOTAL:	\$75,811 / YR
MONTHLY COST:	\$6,317 / M
MONTHLY NNN CHARGES PER SF ...	\$6,317 / 25,790 = \$0.24	



- A. Subject Property – Arch Plaza
- B. Newhall Baptist Church
- C. Master’s College
- D. Metro Link
- E. Brand new Community center
- F. Old Town Newhall
- G. Brand new multi-million dollar Library
- H. McDonalds
- I. Lyons Ave
- J. San Fernando Rd. / Rail Road
- K. Future Residential Development
- L. Freeway- 5
- M. Freeway -14
- N. Stevenson Ranch
- O. Henry Mayo Newhall Memorial Hospital
- P. Vista Valencia Golf Course
- Q. TPC
- R. College of Canyons
- S. Valencia Town Center

SECTION II – INVESTMENT OVERVIEW



www.SoCalPowerHouse.com

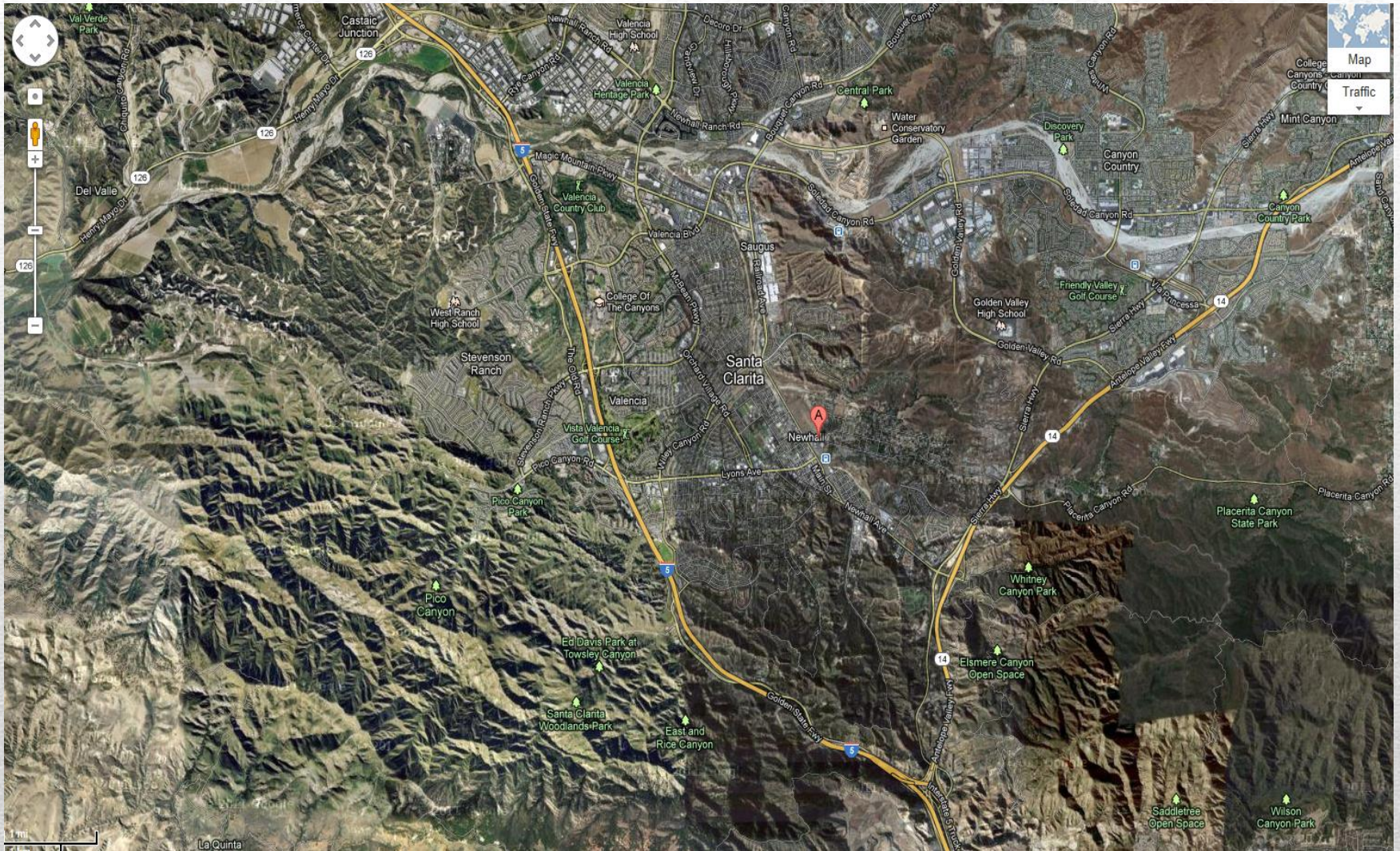
ARCH PLAZA, 24601-24647 ARCH STREET, SANTA CLARITA

68,875 S.F. Land and 25,790 S.F. Buildings

- ✓ Good exposure, street on 3-sides, 12th St, 13th St., and Arch Street
- ✓ Lots of improvement planned in Newhall redevelopment plan.
- ✓ Commercial, industrial, and office zone mix allow almost any tenant
- ✓ Lyons Ave. has been approved to extend to the main street of the center
- ✓ Future Tract homes are planned on the vacant land across the street
- ✓ Enterprise Zone, which brings about low property tax rate about 1%, unlike new centers at nearly 1.5%
- ✓ Few blocks away from Masters College, Multi million dollars Library, multi-million dollar Community Center, Newhall Train Station.
- ✓ Easy Freeway access



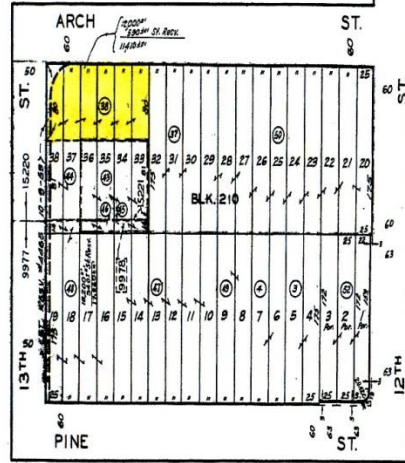




California Counties Title

2834 9
SCALE 1" = 80'

2011



4-9-66 RE-1020 3-7-59
 12-10-62 3-30-59
 10-4-60 10-4-60
 4-4-62 4-4-62
 3-7-62 3-7-62
 6-1-67 6-1-67
 62060519
 70008625
 70282648
 710315506
 660925940-87
 8531-88
 81857-88
 70105555541-51
 36208
 94822
 51024
 2010104

S. P.

R. R.

TRACT NO. 1078
M.B. 18-169

CODE
9977
9976
15220
15221

FOR MEASUREMENT SEE 1132-1

JAN 26 2011

ASSessor'S MAP
COUNTY OF LOS ANGELES, CALIF.

Prepared On : 05/09/2012
2012 CoreLogic. All rights reserved



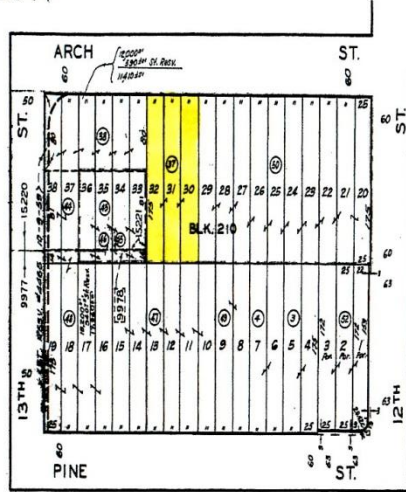
Assessor Map



California Counties Title

2834 9
SCALE 1" = 80'

2011



S. P.

R. R.

TRACT NO. 1078
M.B. 18-169

CODE
9977
9976
15220
15221

FOR PER ASSESSOR'S MAP 1" = 80' - 6

4-19-62 REVISED
12-16-65 3-7-59
3-30-59
12-5-59
4-6-62
5-2-62
5-2-62
6-2-62
7-2-62
8-2-62
9-2-62
10-2-62
11-2-62
12-2-62
1-2-63
2-2-63
3-2-63
4-2-63
5-2-63
6-2-63
7-2-63
8-2-63
9-2-63
10-2-63
11-2-63
12-2-63
1-2-64
2-2-64
3-2-64
4-2-64
5-2-64
6-2-64
7-2-64
8-2-64
9-2-64
10-2-64
11-2-64
12-2-64

JAN 26 2011

ASSESSOR'S MAP
COUNTY OF LOS ANGELES, CALIF.

Prepared On: 05/09/2012
2012 Cordic.org. All rights reserved

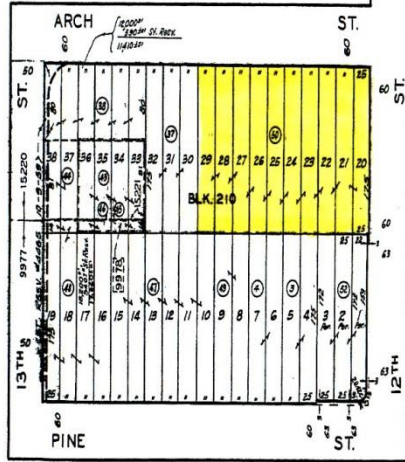


Assessor Map

California Counties Title

2834 9
SCALE 1" = 80'

2011



S. P. R. R.

TRACT NO. 1078
M.B. 18-169

CODE
9977
9976
15220
15221

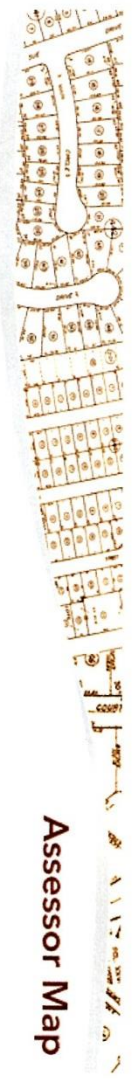
FOR PREP. ASSUM. SEE 173C-6

4-9-65 REVISED
12-10-65 3-7-59
3-30-59
12-1-59
4-6-62
2-7-59
4-1-62
620679519
70079625
70280643
71013506
06092504-87
8831-81
88254-88
101150100A1-31
90908
91522
97124
201104

JAN 26 2011

ASSessor'S MAP
COUNTY OF LOS ANGELES, CALIF.

Prepared On: 05/09/2012
2012 CoreLogic. All rights reserved



Assessor Map



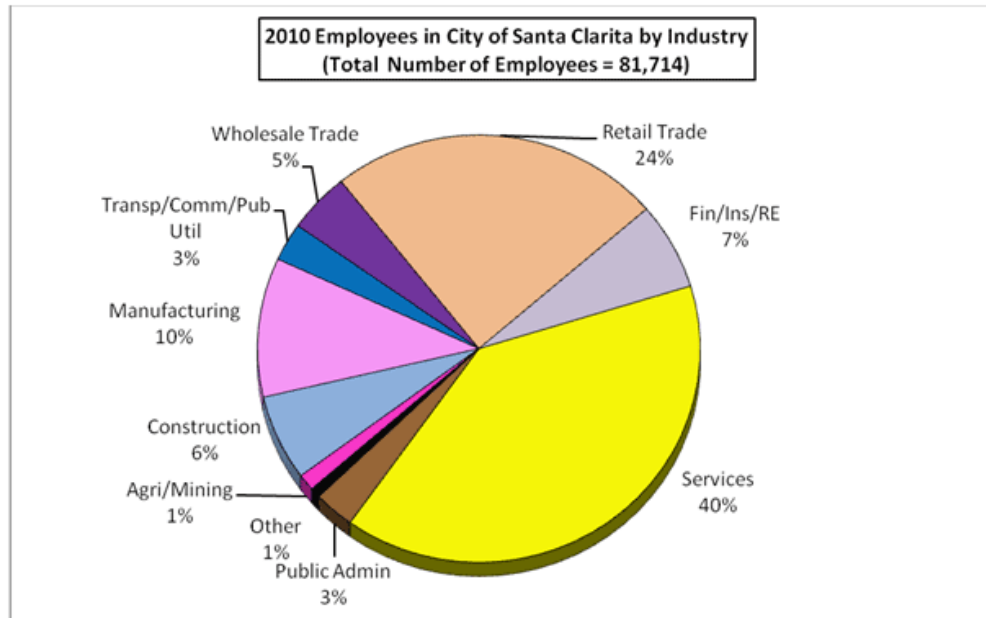
LARGEST EMPLOYERS

COMPANY	TYPE OF BUSINESS	2011 # OF EMPLOYEES
William S. Hart Union School District	Public Junior High & High School District	2,988
Six Flags Magic Mountain	Entertainment/Theme Park	2,230
Saugus Union School District	Public Elementary School District	1,900
Princess Cruises	Vacation Cruise Line Services	1,625
College of the Canyons	Community College	1,603
U.S. Postal Service	Government	1,564
Henry Mayo Newhall Memorial Hospital	Healthcare: Services	1,356
Newhall School District	Public Elementary School District	854
Quest Diagnostics (formerly Specialty Laboratories)	Healthcare: Medical Research & Development	850
The Master's College	Private University	841
Woodward HRT (formerly H.R. Textron)	Manufacturer: Aerospace	740
City of Santa Clarita	Government	633
Wal-Mart	Retailer	592
California Institute of the Arts	Private University	525
Phamavite	Manufacturer: Dietary, Mineral, Herbal Supplements	480
Aerospace Dynamics International	Manufacturer: Aerospace Structural Components	470
ITT Aerospace Controls	Manufacturer: Aerospace	420
Arvato Digital	Business Services	400
Contractors Wardrobe	Manufacturer: Home Improvement Products	400

Source: The California Economic Forecast, May 2011

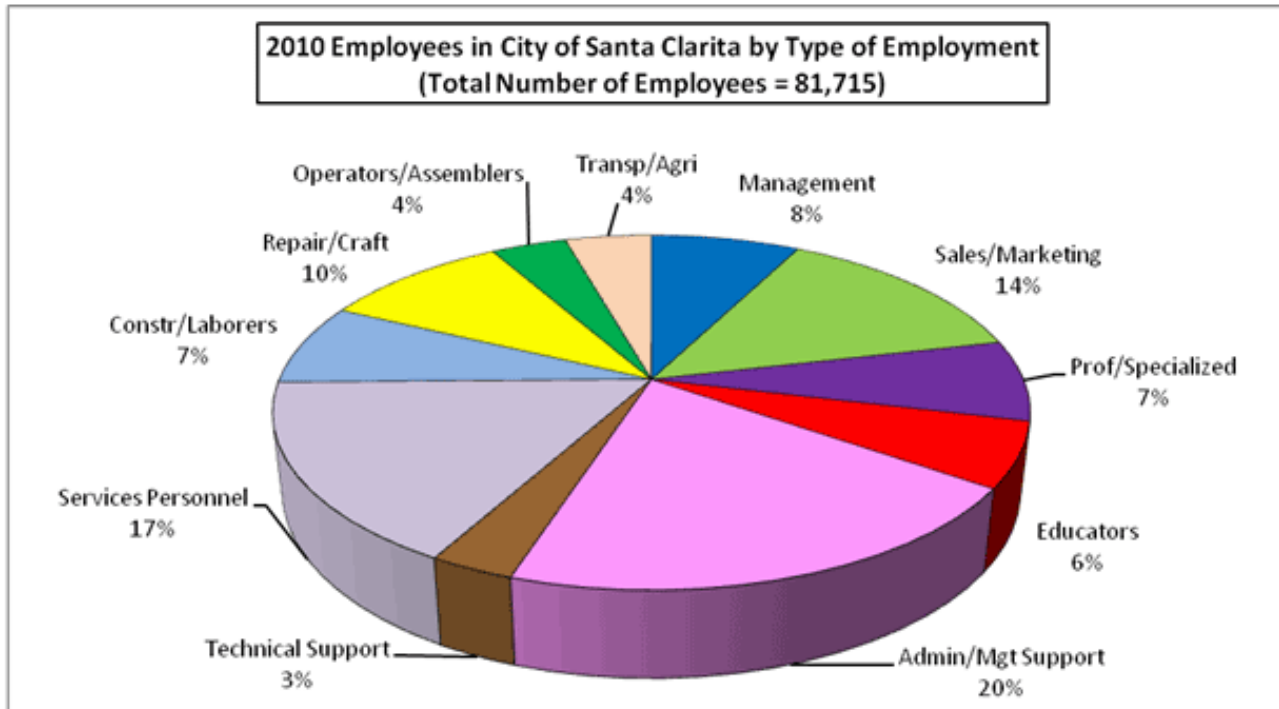
WORKFORCE

Close to two in five or 40% of the workforce in the City of Santa Clarita is employed in the services sector. An additional 24% of the City's workforce is employed in retail trade followed by 10% in manufacturing, 7% in finance/insurance/real estate industries, 6% in construction, and 5% in wholesale trade.



Source: Claritas Site Reports, July 5, 2011

One-fifth or 20% of the City of Santa Clarita's workforce are in administrative and support positions followed by 17% who are service personnel, 14% in sales and marketing, 13% in professional/specialized positions or educators, and 8% are in management roles.



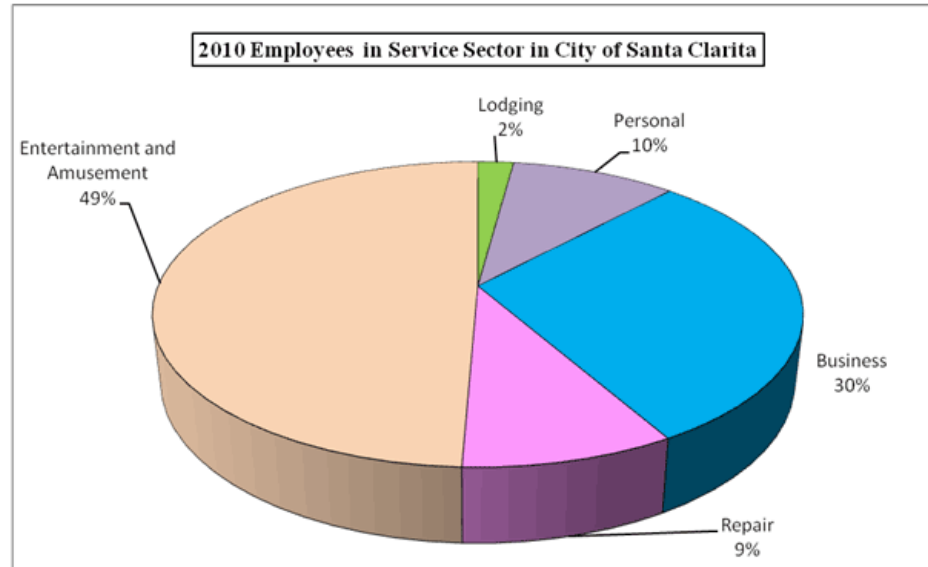
Source: Claritas Site Reports, July 5, 2011

The majority of the manufacturing workforce in the City of Santa Clarita is involved in highly technical manufacturing sectors.

MANUFACTURING SECTOR	NUMBER OF EMPLOYEES	% OF TOTAL
Measuring & Analyzing Instruments	2,723	31.6%
Industry & Commercial Machinery & Computers	1,317	15.3%
Printing, Publishing & Allied Industries	718	8.3%
Transportation Equipment	595	6.9%
Electrical & Electronic Equipment (e.g. Computers)	565	6.6%
Fabricated Metal Products	564	6.6%
Rubber & Miscellaneous Plastics Products	375	4.4%
Chemicals & Allied Products	372	4.3%
Leather & Leather Products	303	3.5%
Primary Metal Industries	290	3.4%
Stone, Clay, Glass & Concrete Products	163	1.9%
Food & Kindred Products	131	1.5%
Textile Mill Products	103	1.2%
Furniture & Fixtures	29	0.3%
Lumber & Wood Products, except Furniture	22	0.3%
Paper & Allied Products	16	0.2%
Apparel, Other Fabric Products	9	0.1%
Tobacco	1	0.0%
Petroleum Refining & Related Industries	-	0.0%
Miscellaneous Manufacturing Industries	308	3.6%
Total Manufacturing	8,604	100.0%

Source: Claritas Site Reports, July

Close to one-half or 49% of the City of Santa Clarita's workforce in the services sector is employed in entertainment and amusement followed by 30% in business services, 10% in personal services, 9% in repair services, and 2% in lodging.



Source: Claritas Site Reports, July 5, 2011

Based on an independent study of 367 communities across the United States by the Kosmont-Rose Institute, cost ratings were developed in order to compare difference communities based on business taxes, telephone taxes, sales taxes, property taxes, electric taxes, and state income taxes.

Santa Clarita is ranked as Low Cost (\$\$) compared to the Cities of Los Angeles and Pasadena which are both ranked as Very High Cost (\$\$\$\$). Out of 71 cities in Los Angeles County surveyed, Santa Clarita is one of the 10 lowest cost cites.

The City of Santa Clarita is the 4th largest city (including unincorporated areas) in Los Angeles, is one of 5 cities without a business license fee requirement, and ranks as the 25th highest property tax ranking in the County of Los Angeles.

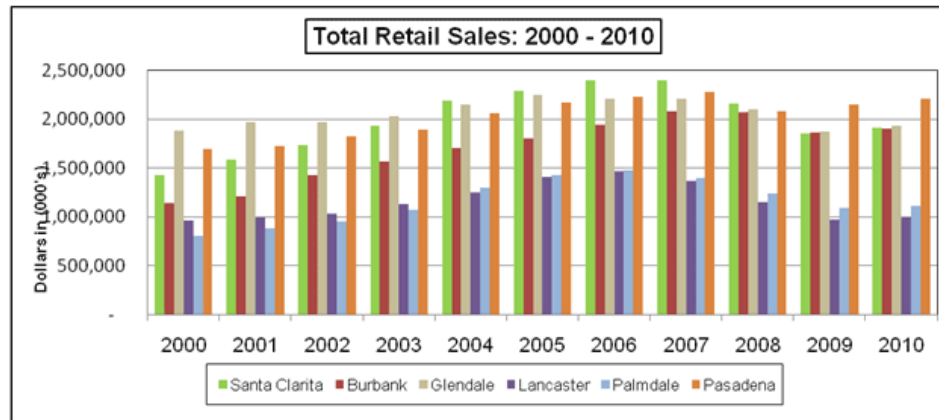
2009 COST OF DOING BUSINESS						
	SANTA CLARITA (\$\$)	BURBANK (\$\$\$\$)	GLENDALE (\$\$\$\$)	LANCASTER (\$\$)	PASADENA (\$\$\$\$\$)	VENTURA (\$\$\$\$)
Tax Rates						
Electric	-	7.00%	7.00%	-	7.67%	5.00%
Telephone	-	7.00%	7.00%	-	8.28%	5.00%
Cellular	-	7.00%	-	-	8.28%	5.00%
Gas	-	7.00%	7.00%	-	7.90%	5.00%
Water	-	0.00%	7.00%	-	7.67%	-
Cable	-	0.00%	7.00%	-	9.40%	-
Sales Tax	8.75%	8.75%	8.75%	8.75%	8.75%	7.25%
Est. Ad Valorem Property Tax Rate	1.150565%	1.070000%	1.120000%	1.130000%	1.130000%	1.200000%
Business License Taxes	None	\$71.75 Base fee + per employee	None	Per employee fee	Base fee + per employee	Base fee + per receipts
Incentives						
State Enterprise Zone	Santa Clarita Enterprise Zone	None	None	Antelope Valley	Altadena/Pasadena Enterprise Zone	None
Business Improvement Districts	Tourism Marketing District	Downtown Burbank	Montrose Shopping Park; Adams Square	Yes	Old Pasadena; South Lake Avenue; Playhouse District	None
Recycling Market Development Zone	Yes	None	None	None	None	None
Foreign Trade Zone	None	None	None	In application for zone expansion	None	None
Other Business or Incentive Zones	Mello-Roos; Landscape; Lighting; Open Space	Landscape; Lighting	None	New Air Control District; Mello-Roos; Parking	Local Enterprise Zone; Technology District	None
Redevelopment Project Areas/TIFS	Newhall Redevelopment Project	West Olive; Burbank Merged & Amended	CBD; San Fernando Road Corridor; Downtown Development Standards	Residential; CBD; Fox Field; Maragos; Areas No. 5-7	Villa Park; Downtown Orange Grove; Old Pasadena; Fair Oaks Avenue; Lincoln Avenue; Orange Grove	Merged Downtown Redevelopment Project Area - mixed use

Notes: \$ represents cost rating. \$ = Very Low Cost, \$\$ = Low Cost, \$\$\$ = Average Cost, \$\$\$\$ = High Cost, and \$\$\$\$\$ = Very High Cost.

Source: Rose Institute of State and Local Government, 2009 Kosmont-Rose Institute Cost of Doing Business Survey

FILM INDUSTRY

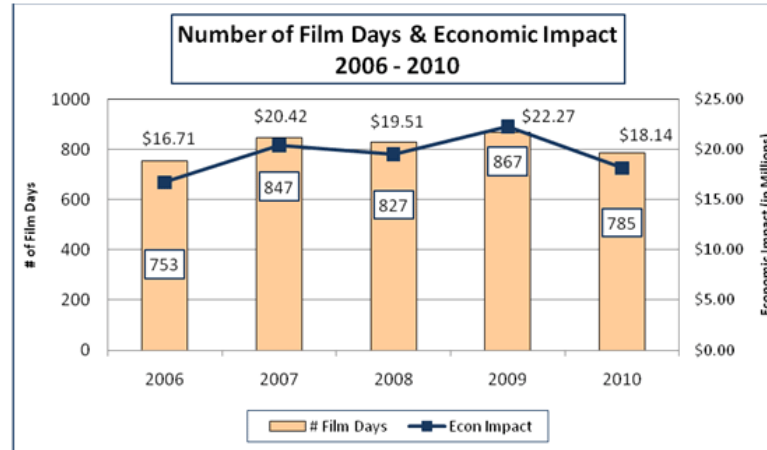
Over the past 10 years, retail sales in Santa Clarita have increased from \$1.43 billion in 2000 to \$1.91 billion in 2010. Sales peaked in 2006, prior to the recession, at \$2.40 billion and have exceeded sales of the comparison markets until 2009 when sales became comparable to those of Burbank and Glendale and exceeded sales in Lancaster and Palmdale.



Source: California Retail Survey, 2011

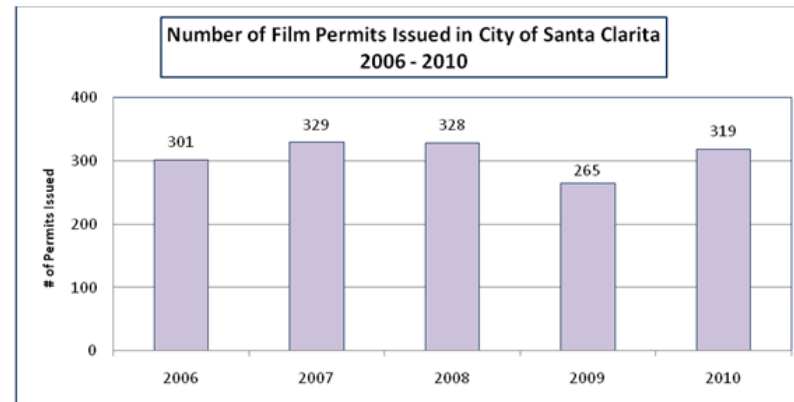
One of the top 25 markets with a rank of 24 out of 482 cities in California for sales and the 19th highest per capita income level, Santa Clarita is on par with major shopping cities such as Glendale, home to Americana on Branch and the Glendale Galleria, and Pasadena, home to Paseo Colorado, Lake Avenue shopping district, and Old Town Pasadena, in terms of both retail dollars spent and number of retail stores in the communities.

The number of filming days in 2010 decreased 9% to 785 days from 2009 following a 5% increase from the previous year. Additionally, filming in Santa Clarita contributed \$18.14 million to the local economy in 2010, down 19% from \$22.27 million in 2009.



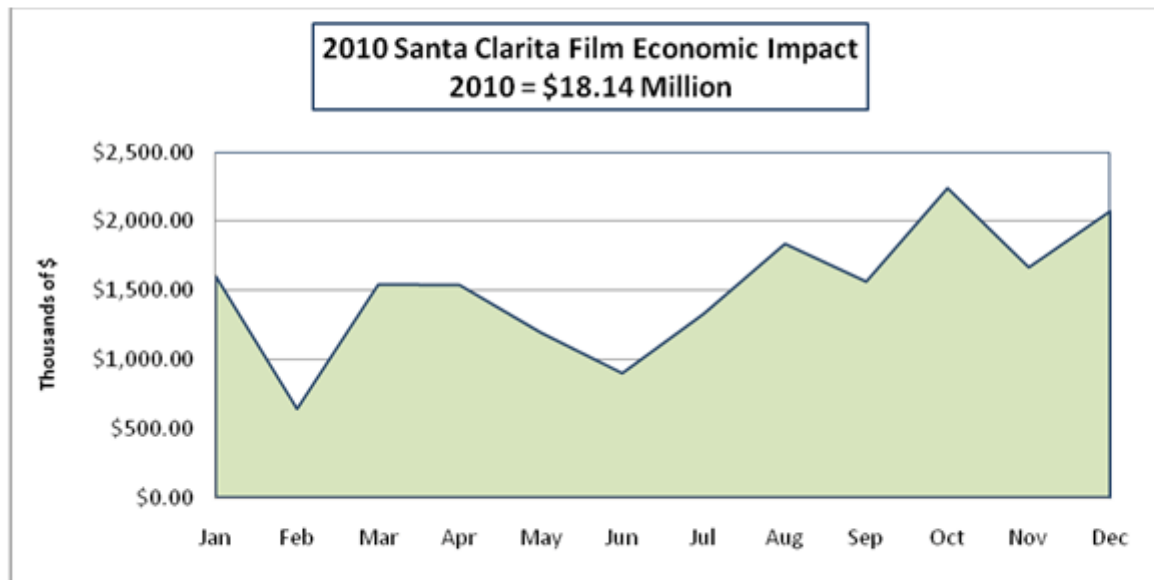
Source: City of Santa Clarita Film Office, 2011

The number of permits issued has increased from 2006. In 2010, 319 film permits were issued compared to 301 in 2006.



Source: City of Santa Clarita Film Office, 2011

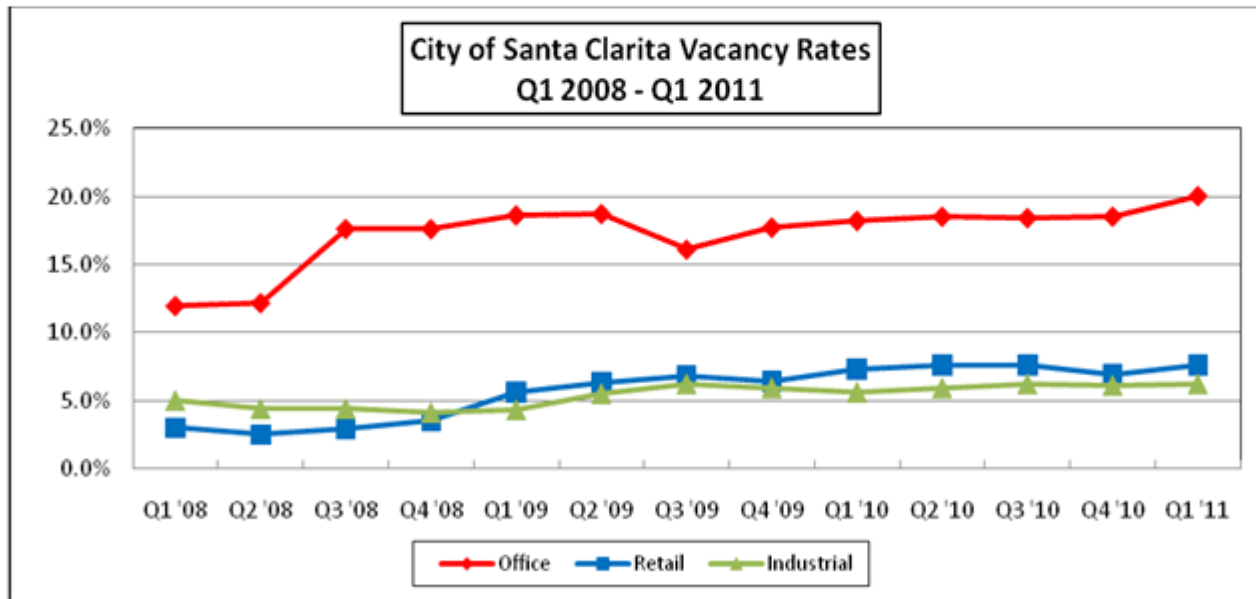
In 2010, a total of \$18.14 million was spent in the City of Santa Clarita from filming activity that occurred. In fact, the film economic impact was greater during the second half of 2010 which accounted for 59% of the impact compared to the first half that accounted for 41% of the economic impact.



Source: City of Santa Clarita Film Office, 2011

VACANCY RATES

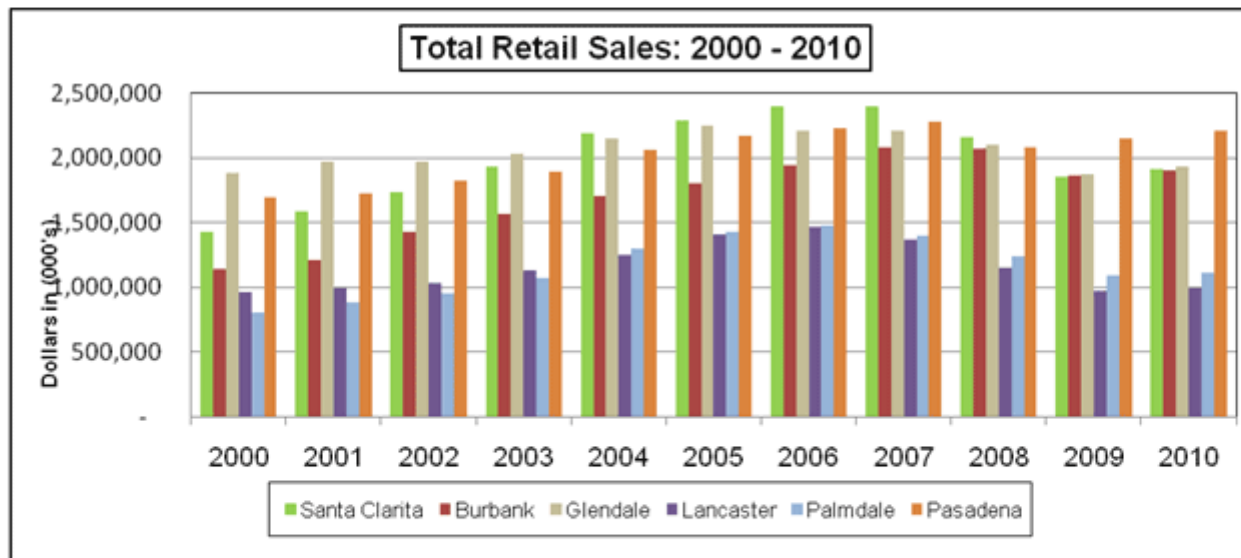
Office, retail and industrial vacancy rates remain higher than vacancy rates in 2008 in the City of Santa Clarita. Office vacancy rates reached 20.0% in the First Quarter of 2011 while industrial and retail vacancy rates reached 6.2% and 7.6%, respectively. The higher office vacancy rates can be attributed to the weakened economy and new office inventory in the marketplace not yet absorbed..



Source: CoStar Property reported by City of Santa Clarita, January 2011

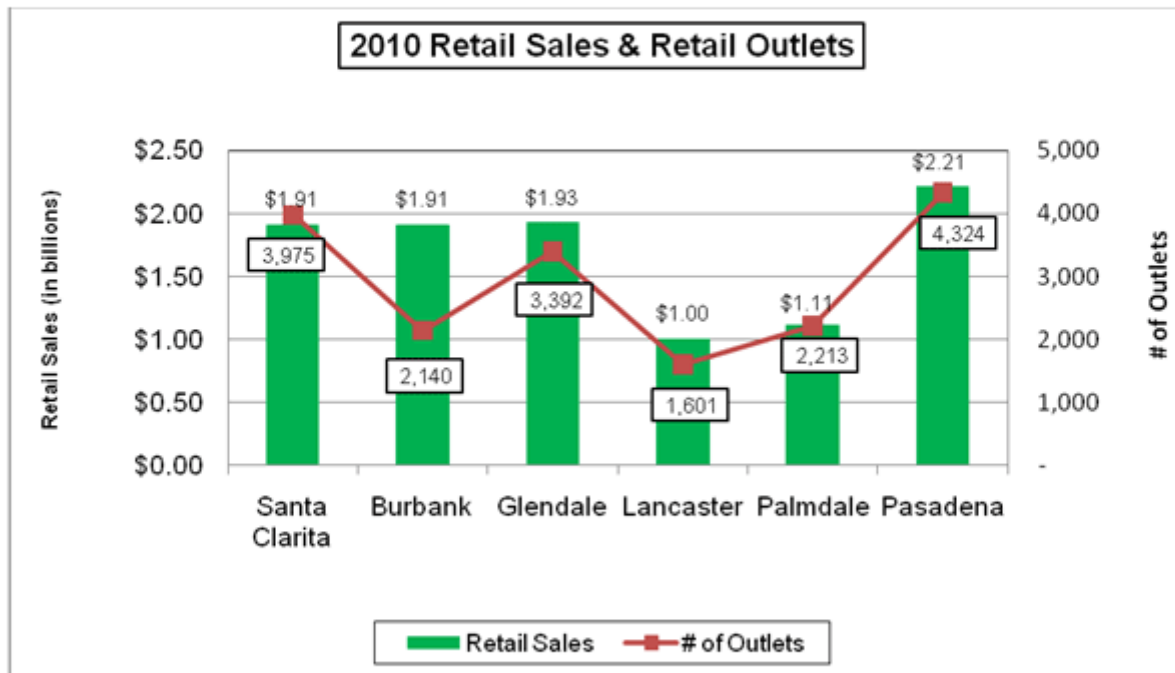
RETAIL SALES

Over the past 10 years, retail sales in Santa Clarita have increased from \$1.43 billion in 2000 to \$1.91 billion in 2010. Sales peaked in 2006, prior to the recession, at \$2.40 billion and have exceeded sales of the comparison markets until 2009 when sales became comparable to those of Burbank and Glendale and exceeded sales in Lancaster and Palmdale.



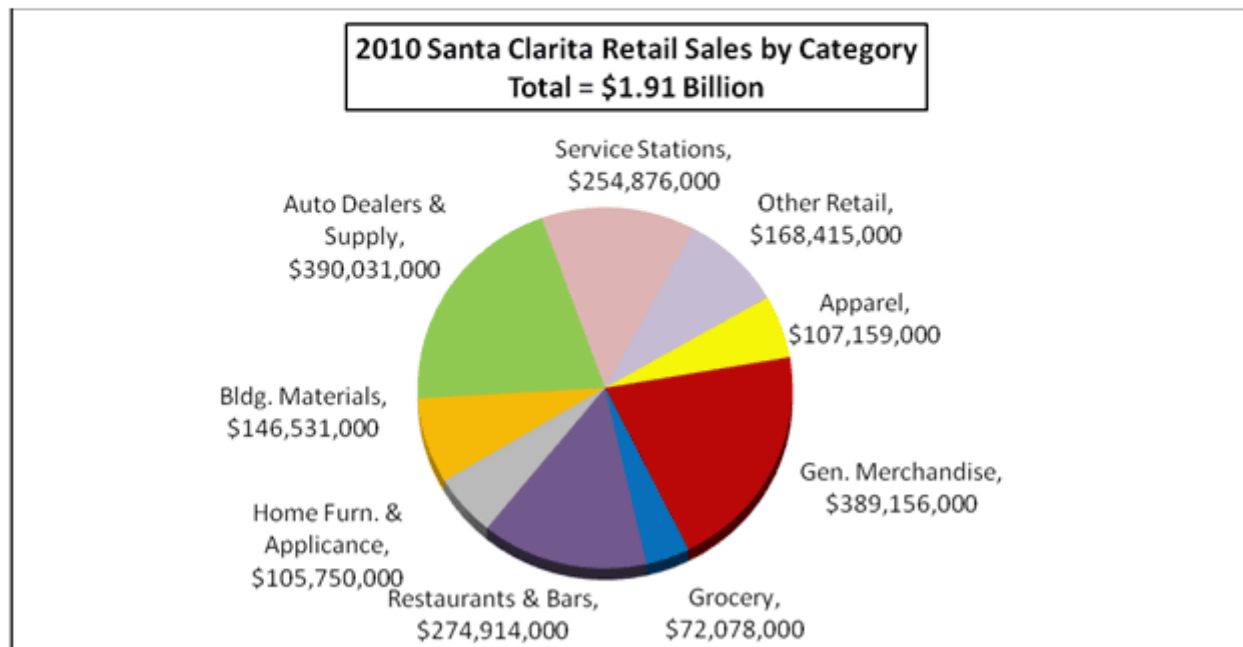
Source: California Retail Survey, 2011

Retail sales in Santa Clarita are comparable to sales in Glendale yet below sales in Pasadena. Additionally, there are more retail outlets in Santa Clarita than in Glendale and slightly fewer than in Pasadena.



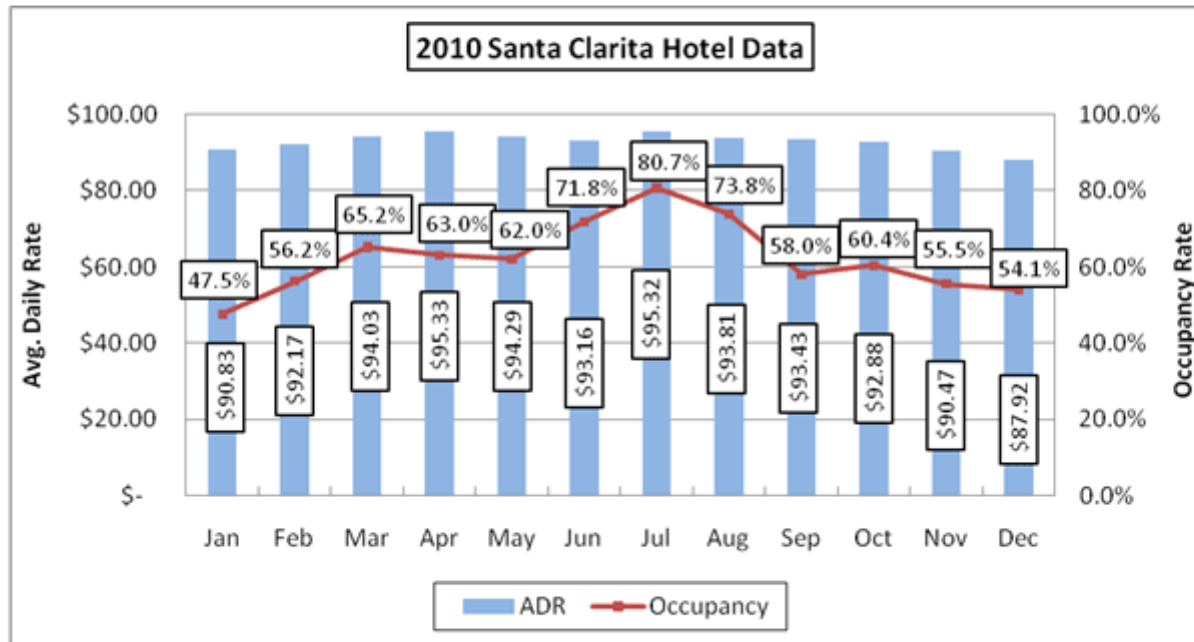
Source: California Retail Survey, 2011

Retail sales in Santa Clarita in 2010 reached \$1.91 billion of which 20% each of the sales were in general merchandise stores and automobile dealerships and suppliers followed by 14% in restaurants and bars, and 13% in service stations.



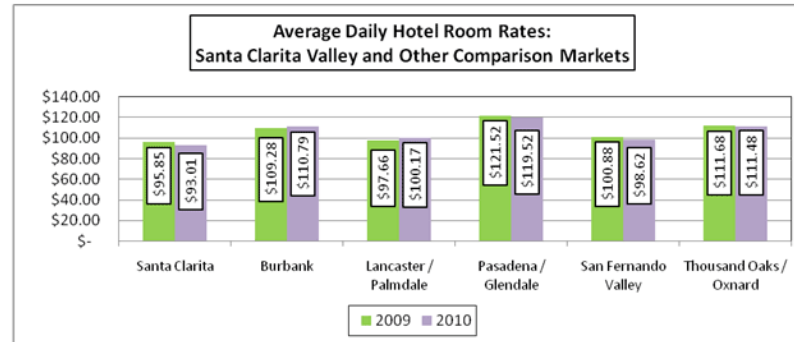
HOTEL ENVIRONMENT

Santa Clarita's hotel market remained relatively strong throughout 2010. Occupancy rates and average daily room rates peaked in the summer months at 81% and \$95.32, respectively.



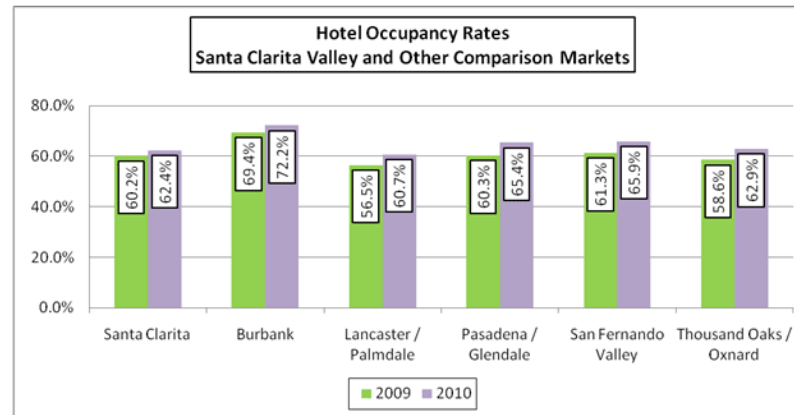
Source: Smith Travel Research, Santa Clarita Valley Trend Report, December 2010

Santa Clarita's average daily hotel room rate of \$93.01 in 2010 remains more affordable or lower than rates in all comparison markets and is only slightly lower than rates in the San Fernando Valley.



Source: Smith Travel Research, Multi-Segment Report December 2010

In 2010, Santa Clarita hotel occupancy rates increased to 62.4% from an occupancy rate of 60.2% in 2009. Occupancy rates in Santa Clarita were comparable to those in Thousand Oaks/Oxnard and above rates in Lancaster/Palmdale.



Source: Smith Travel Research, Multi-Segment Report, December 2010

SANTA CLARITA HOTEL PROPERTIES

Hotel	# of Rooms	Meeting Space (Sq. Ft.)
Hyatt Regency Valencia	244	11,264 + 3,000 pre-function space
Embassy Suites	156	9,412
Courtyard by Marriott	140	1,056
Hilton Garden Inn	152	2,496
Holiday Inn Express	118	635
La Quinta Inn & Suites	112	300
Best Western Valencia Inn	122	None
Santa Clarita Motel	34	None
Comfort Suites	101	None
Residence Inn	90	2,037 (shares with Fairfield Inn)
Fairfield Inn	66	2,037 (shares with Residence Inn)
Hampton Inn	128	450
Super 8	49	None
Travelodge	54	None

Source: City of Santa Clarita, June 2011

Downtown Newhall Specific Plan

The Specific Plan consists of a 20-block downtown served by Metro link commuter rail, a commercial corridor in downtown, two flanking neighborhoods, and an industrial district. Upon build out, the Specific Plan will include up to 1,092 new residential units and nearly 1-million square feet of new commercial space. A portion of this growth will be attributed to new development, while some will also include revitalization of existing buildings.



Brand New Newhall Library



SANTA CLARITA UPDATES

Santa Clarita Valley Enterprise Zone Receives Final Approval and is Now Accepting Vouchers for Expanded Zone Areas **Posted Date: 4/9/2012 4:15 PM**

The City of Santa Clarita, Los Angeles County, and the Santa Clarita Valley Economic Development Corporation announced today that the California Department of Housing and Community Development has approved all details of the new Santa Clarita Valley Enterprise Zone designation, which means businesses in the expanded zone area may now begin processing vouchers for qualified employees and taking advantage of the tax savings available through the program.

The Santa Clarita Valley Enterprise Zone benefits are retroactive to January 1, 2011 with benefits continuing through January 1, 2026. Businesses in the expanded areas are now able to process vouchers and enjoy tax benefits of the Enterprise Zone program.

“This is truly a great day for the Santa Clarita Valley business community,” commented City of Santa Clarita Mayor Laurie Ender. “We know the Enterprise Zone is the area’s leading business attraction and retention tool and now even more companies can begin saving money and reinvesting in their businesses.”

The Santa Clarita Valley Enterprise Zone encompasses 14,440 acres of commercial and industrial land in the City of Santa Clarita and unincorporated areas of the Santa Clarita Valley, and includes the Commerce Center, Six Flags Magic Mountain, and the new Disney/ABC Studios at the Ranch. "The final designation of the Santa Clarita Valley Enterprise Zone marks the beginning of a strategic opportunity to create jobs and strengthen the Valley's reputation as a dynamic community to grow a business," said Supervisor Michael D. Antonovich. "Implementing an aggressive targeted marketing plan will attract new businesses, jobs and investments in the Santa Clarita Valley."

Since 2007, the Enterprise Zone program has helped 345 Santa Clarita businesses save an estimated \$199 million on their state taxes, in addition to creating more than 976 new jobs in the community.

“The expanded Santa Clarita Valley Enterprise Zone gives our community a competitive advantage. The Enterprise Zone has been and will continue to be a significant tool in attracting premier businesses to the Santa Clarita Valley,” said Jonas Peterson, President/CEO of the Santa Clarita Valley Economic Development Corporation. “We look forward to partnering with the City and Los Angeles County to share information about the program, its benefits, and successes to engage more local businesses and attract regional and national companies looking to relocate.”

In 2010, the City of Santa Clarita, Los Angeles County, and the Santa Clarita Valley Economic Development Corporation collaborated on an application to the state for an expanded, replacement zone, which would allow even more companies in the Santa Clarita Valley to take advantage of the tax incentive program. The replacement zone received preliminary approval in 2011, but today’s final designation means businesses in the newly-expanded areas can now submit vouchers for hiring tax credits, in addition to taking advantage of other Enterprise Zone-specific savings incentives. For more information about the expanded Enterprise Zone designation or for a map detailing the Santa Clarita Valley Enterprise Zone boundaries, please visit SCVEnterpriseZone.com or call the City’s Economic Development Division at (661) 255-4347.

